


Notes:

- Do not scale from drawing.
- All dimensions in metres unless otherwise stated.
- Please note that marked service locations are indicative only and should be confirmed by topographical survey.




Key:

- Proposed Type 1 Surfacing or similar material
- Proposed Full Depth Construction
- Proposed Hard Strip
- Proposed Bullnose Kerb
- Proposed Heel Kerb
- Proposed Bollard
- Access Gate
- Removable Fencing

| Rev. | Date | Revision details | Drawn | Checked | Approved |
|------|------|------------------|-------|---------|----------|
| | | | | | |

© This drawing is the property of SYSTRA Limited and the information can only be reproduced with their prior permission.



19 Charlotte Square,
Edinburgh,
EH2 4DF

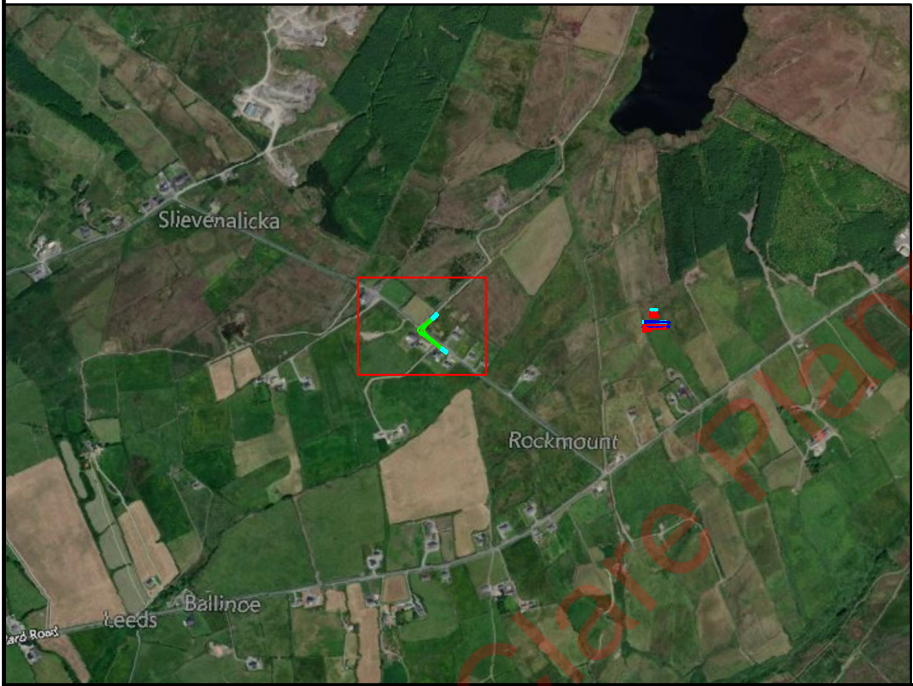
T 0131 460 1847
E scotland@systra.co.uk

Client
Gavin & Doherty Geosolutions

Project
Illaunbaun Wind Farm
Site Access Design

Title
General Layout

| Drawn | Checked | Approved |
|-------------------------------|-------------------------|----------------|
| TF | ADV | ADV |
| Original dtp. size A3 | Date 16/10/2024 | Scale 1:500 |
| Drawing Status Information | Drawing Number GL001 | Rev. - |



Notes:

1. Do not scale from drawing.
2. All dimensions in metres unless otherwise stated.
3. Please note that marked service locations are indicative only and should be confirmed by topographical survey.

Key:

2.4m x 160m Visibility Splay to the North West

Rev. Date Revision details Drawn Checked Approved

© This drawing is the property of SYSTRA Limited and the information can only be reproduced with their prior permission.

SYSTRA
www.systra.com/uk
18 Charlotte Square,
Edinburgh,
EH2 4DF
T 0131 460 1847
E scotland@systra.co.uk

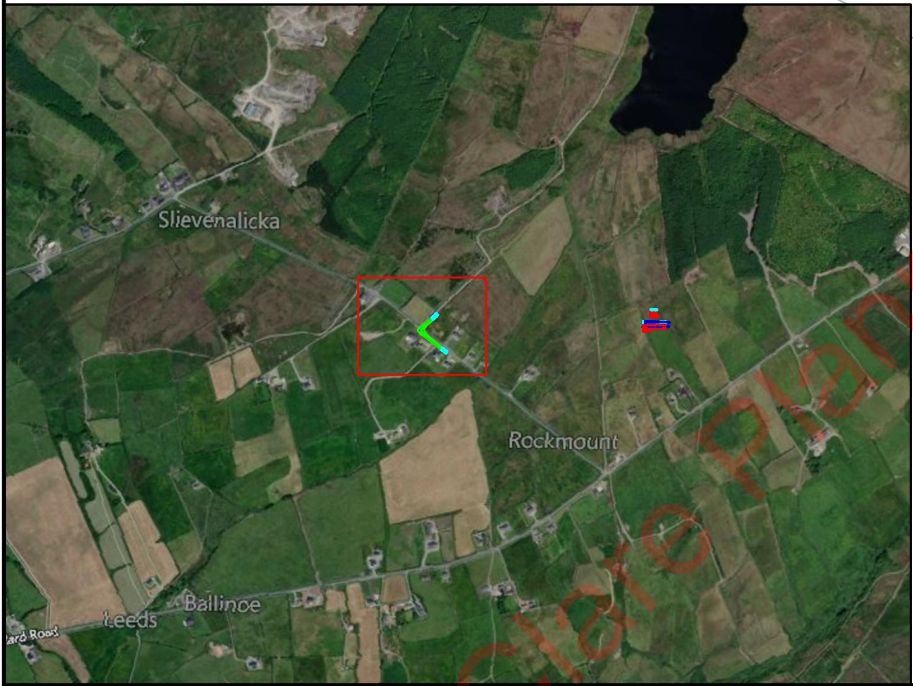
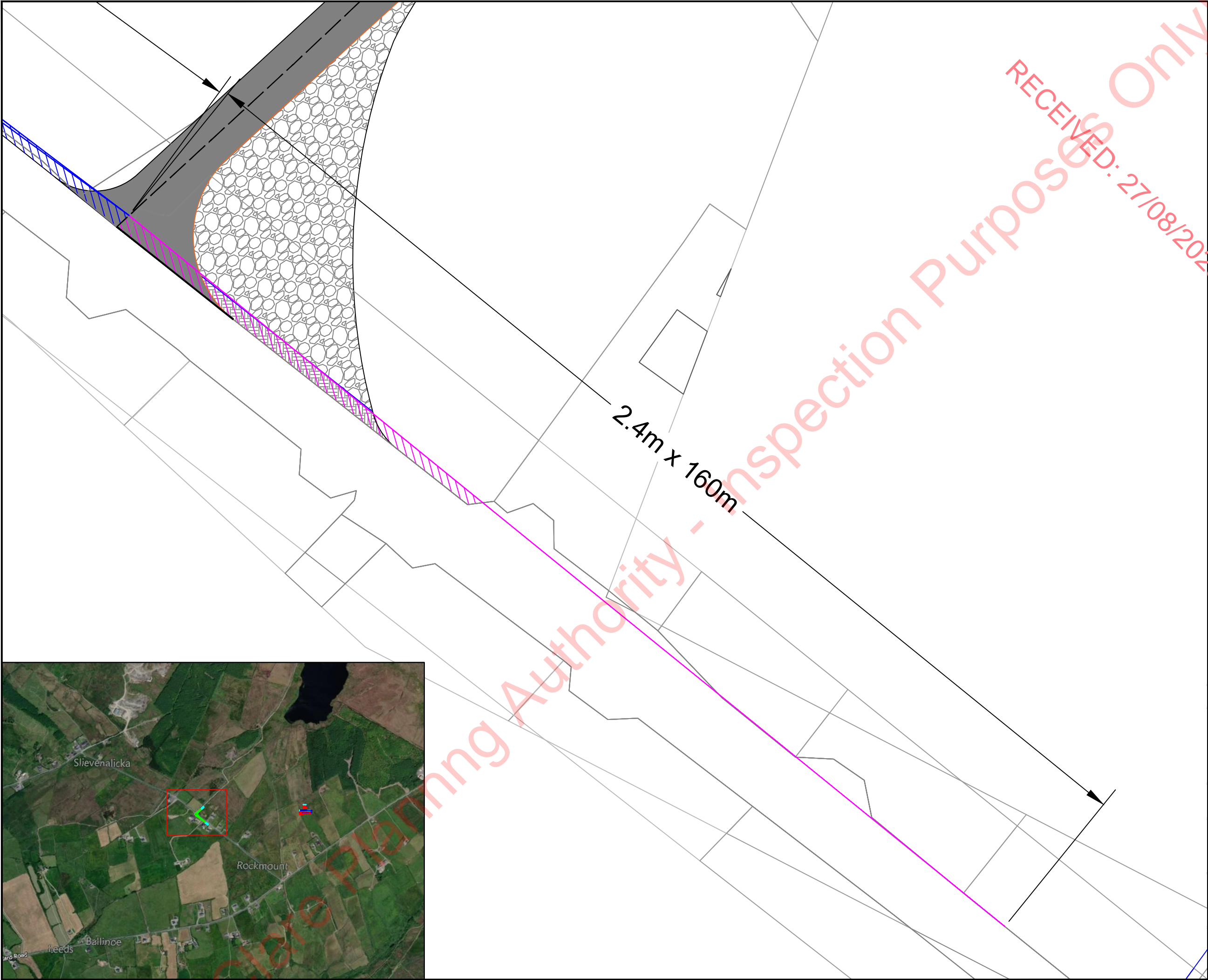
Client
Gavin & Doherty Geosolutions

Project
Illaunbaun Wind Farm
Site Access Design

Title
Visibility Splays
Sheet 1 of 2

| | | |
|-------------------------------|--------------------|-----------------|
| Drawn TF | Checked ADV | Approved ADV |
| Original dwg. size A3 | Date 16/10/2024 | Scale 1:500 |
| Drawing Status Information | | Rev. - |

Drawing Number
VBS001



Notes:

1. Do not scale from drawing.
2. All dimensions in metres unless otherwise stated.
3. Please note that marked service locations are indicative only and should be confirmed by topographical survey.

Key:

2.4m x 160m Visibility Splay to the South East

North Arrow

Revision Table:

| Rev. | Date | Revision details | Drawn | Checked | Approved |
|------|------|------------------|-------|---------|----------|
| | | | | | |

© This drawing is the property of SYSTRA Limited and the information can only be reproduced with their prior permission.

SYSTRA
www.systra.com/uk

19 Charlotte Square,
Edinburgh,
EH2 4DF

T 0131 460 1847
E scotland@systra.co.uk

Client
Gavin & Doherty Geosolutions

Project
Illaunbaun Wind Farm
Site Access Design

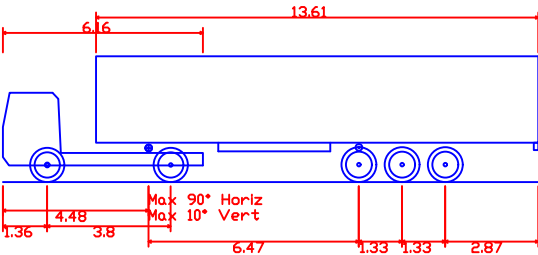
Title
Visibility Splays
Sheet 2 of 2

| Drawn | Checked | Approved |
|-------|---------|----------|
| TF | ADV | ADV |

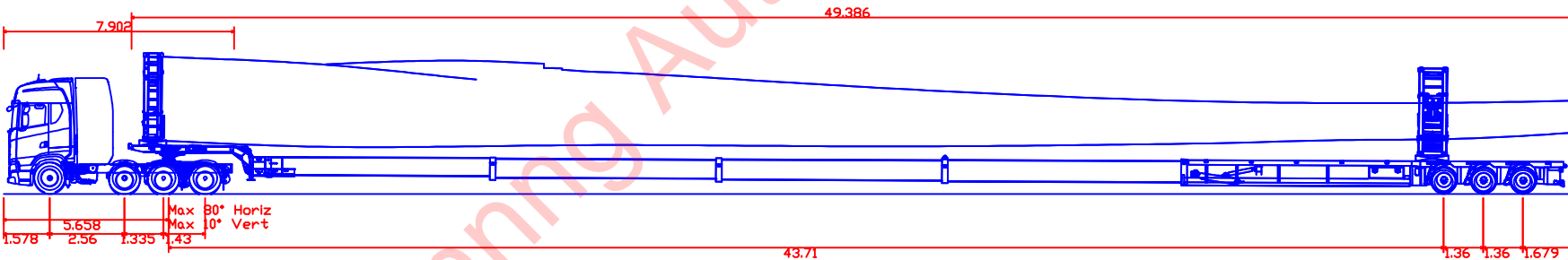
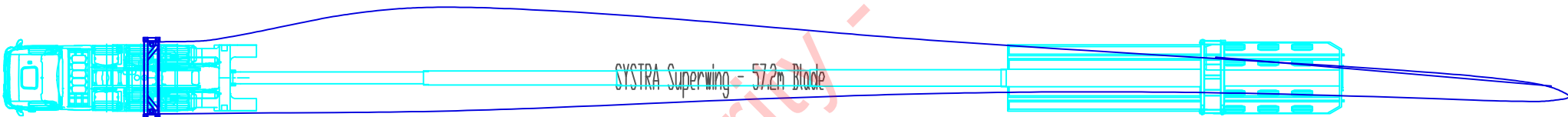
| Original dwg. size | Date | Scale |
|--------------------|------------|-------|
| A3 | 16/10/2024 | 1:500 |

| Drawing Status | Drawing Number | Rev. |
|----------------|----------------|------|
| Information | VBS002 | - |

- Notes:
1. Do not scale from drawing.
 2. All dimensions in metres unless otherwise stated.
 3. Please note that marked service locations are indicative only and should be confirmed by topographical survey.



FTA Design Articulated Vehicle (2016)
Overall Length 16.480m
Overall Width 2.550m
Overall Body Height 3.870m
Min Body Ground Clearance 0.515m
Max Track Width 2.470m
Lock to lock time 3.00s
Kerb to Kerb Turning Radius 6.600m



SYSTRA Superwing - 57.2m Blade
Overall Length 53.767m
Overall Width 3.037m
Overall Body Height 4.857m
Min Body Ground Clearance -0.012m
Max Track Width 2.520m
Lock to lock time 6.00s
Max Wheel Angle 45.00°

| Rev. | Date | Revision details | Drawn | Checked | Approved |
|------|------|------------------|-------|---------|----------|
| | | | | | |

© This drawing is the property of SYSTRA Limited and the information can only be reproduced with their prior permission.

SYSTRA
www.systra.com/uk

18 Charlotte Square,
Edinburgh,
EH2 4DF

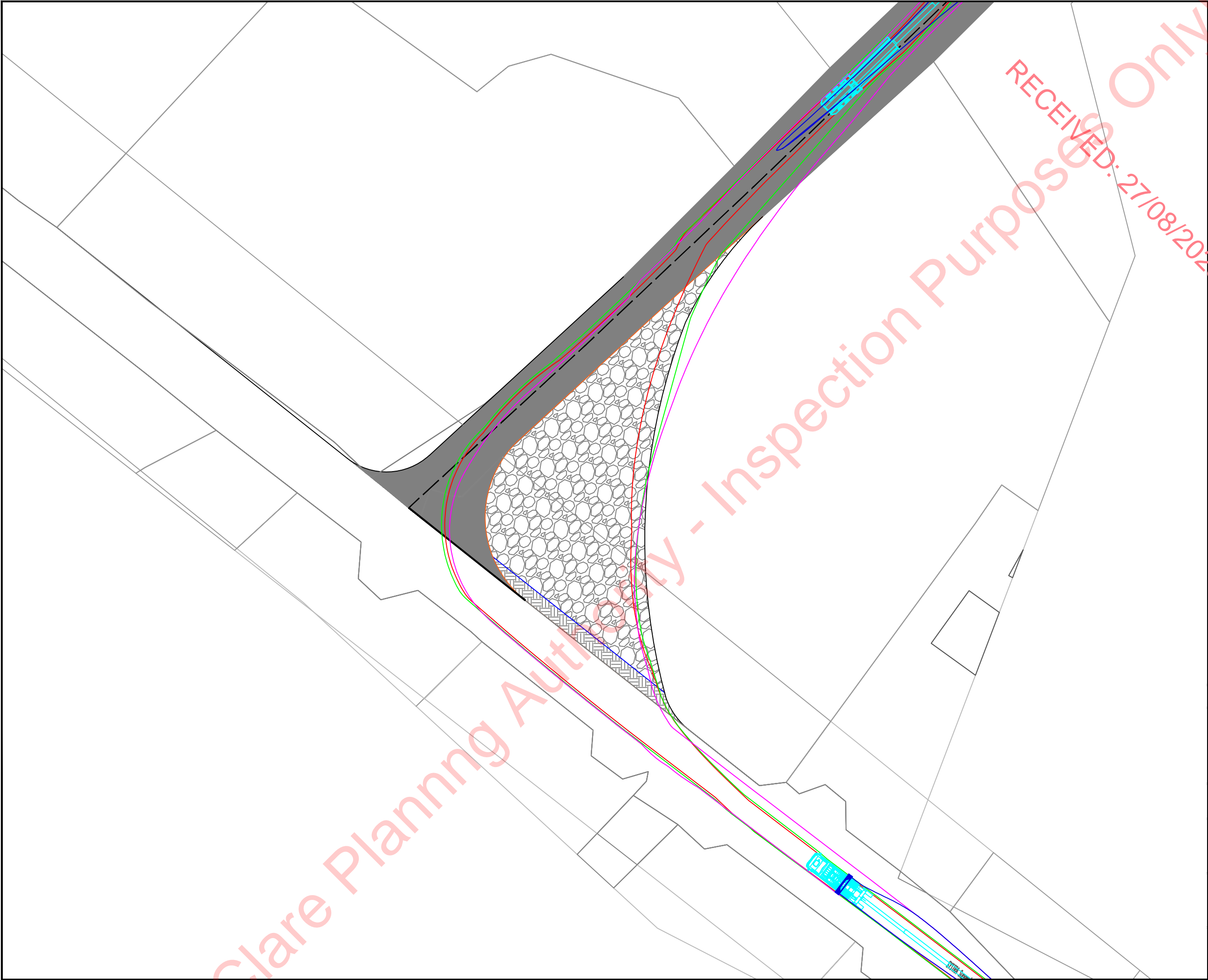
T 0131 460 1847
E scotland@systra.co.uk

Client
Gavin & Doherty Geosolutions

Project
Illaunbaun Wind Farm
Site Access Design

Title
Swept Path Assessment
Vehicle Details

| | | |
|-------------------------------|--------------------------|-----------------|
| Drawn TF | Checked ADV | Approved ADV |
| Original dwg. size A3 | Date 16/10/2024 | Scale NTS |
| Drawing Status Information | Drawing Number VEH001 | Rev. - |



Notes:

1. Do not scale from drawing.
2. All dimensions in metres unless otherwise stated.
3. Please note that marked service locations are indicative only and should be confirmed by topographical survey.

Key:

- Blade Transporter Vehicle
- Blade Outline
- Over-run envelope of tractor and trailer wheels
- Over-sail envelope being swept by tractor and trailer bed
- Over-sail envelope being swept by blade path

| | | | | | |
|------|------|------------------|-------|---------|----------|
| Rev. | Date | Revision details | Drawn | Checked | Approved |
| | | | | | |

© This drawing is the property of SYSTRA Limited and the information can only be reproduced with their prior permission.

19 Charlotte Square,
Edinburgh,
EH2 4DF

T 0131 460 1847
E scotland@systra.co.uk

Client

Gavin & Doherty Geosolutions

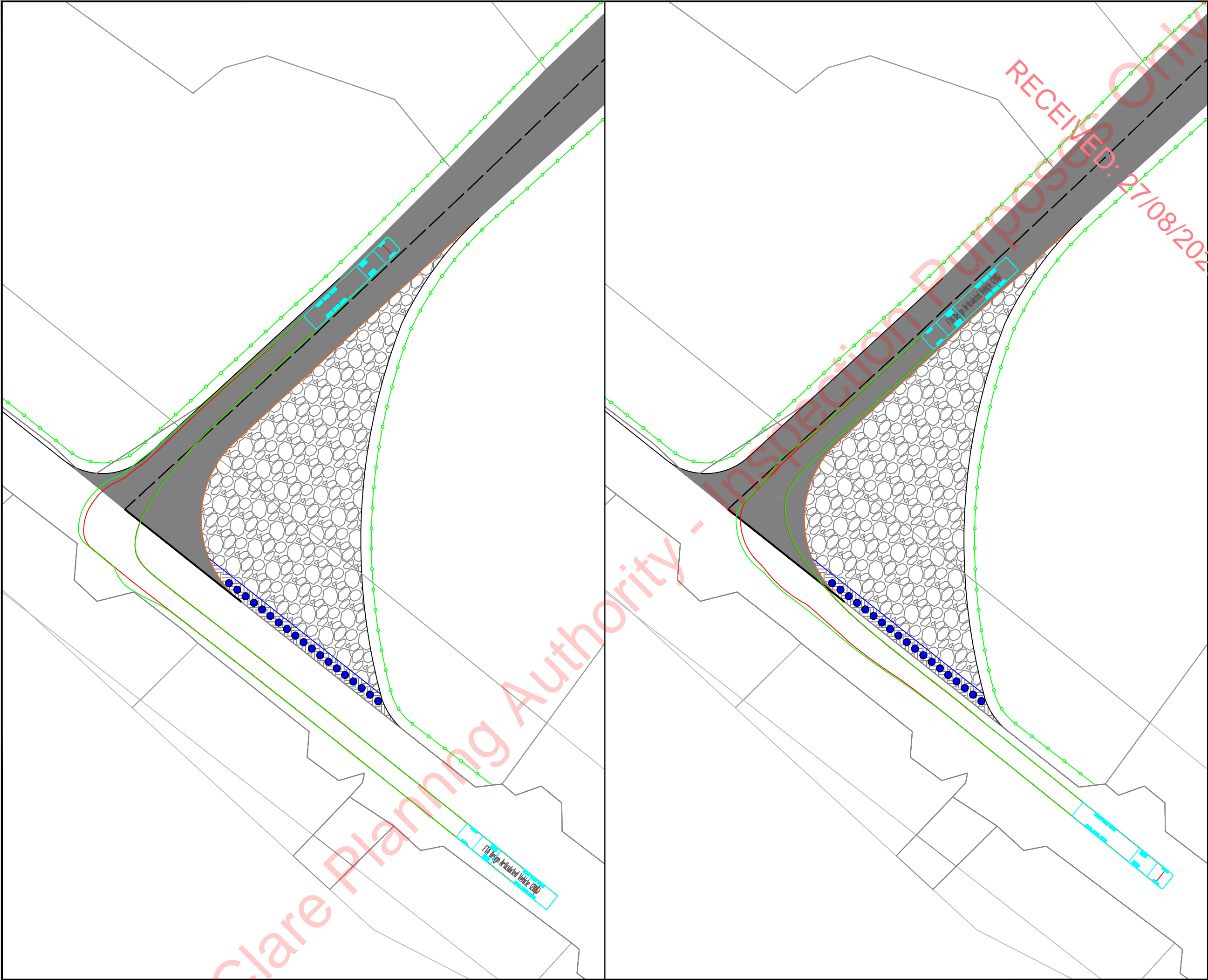
Project

Illaunbaun Wind Farm
Site Access Design

Title

Swept Path Assessment
Vestas V117 - 57.2m Blade on Super Wing Trailer

| | | | | | |
|--------------------|-------------|----------------|------------|----------|-------|
| Drawn | TF | Checked | ADV | Approved | ADV |
| Original dwg. size | A3 | Date | 16/10/2024 | Scale | 1:500 |
| Drawing Status | Information | Drawing Number | SPA001 | Rev. | - |



Notes:

1. Do not scale from drawing.
2. All dimensions in metres unless otherwise stated.
3. Please note that marked service locations are indicative only and should be confirmed by topographical survey.

Key:

- Vehicle Outline
- Over-run envelope of tractor and trailer wheels
- Over-sail envelope being swept by tractor and trailer chassis

Rev. **Date** **Revision details** **Drawn** **Checked** **Approved**

© This drawing is the property of SYSTRA Limited and the information can only be reproduced with their prior permission.

SYSTRA
www.systra.com/uk

19 Charlotte Square,
Edinburgh,
EH2 4DF

T 0131 460 1847
E scotland@systra.co.uk

Client
Gavin & Doherty Geosolutions

Project
Illaunbaun Wind Farm
Site Access Design

Title
Swept Path Assessment
Maximum Legal Articulated Vehicle

| | | |
|-------------------------------|--------------------|-----------------|
| Drawn TF | Checked ADV | Approved ADV |
| Original dwg. size A3 | Date 16/10/2024 | Scale 1:500 |
| Drawing Status Information | | Rev. - |

Drawing Number
SPA002